

Smart Traffic RPi B

Non-invasive traffic monitoring solutions

DESCRIPTION

uRAD Smart Traffic RPi B is a specific solution in the field of smart cities for non-invasive traffic monitoring in urban and interurban environments. This finished customizable solution integrates a 60 GHz mW radar along with a Raspberry Pi and additional specific software and hardware.

Many applications can be installed: vehicle counting, real-time velocity and distance, bike detection, pedestrian detection, access control, etc.

All our systems are affordable, easy to install and configure, very versatile since can be installed in any road, and outstandingly accurate, with an effectiveness higher than 95%.

USE CASES



Velocity measurement up to 180 Km/h.



Urban and interurban roads.



Dense or light traffic scenarios.



Up to 4 lanes monitoring with a single radar. Up to 3 lanes in each direction.



Counting vehicles with positive (go away) and negative (approach) velocity simultaneously.



Vehicle discrimination between regular, medium and long vehicles, bicycles and pedestrians.



Other specific traffic applications such as real-time velocity and distance, bike detection, pedestrian detection, access control, etc.



TECHNICAL FEATURES

RF Parameters

Frequency	60 - 64 GHz
Modulation	FMCW
Emitting power	15 dBm
Field of view	160 °

Power supply

Voltage	100 - 240V AC, 50/60 Hz
Connector	3 Pin IEC320 C14 standard connector
Consumption	4.5 W
Battery	40000 mAh (~30 h)

Mechanical parameters

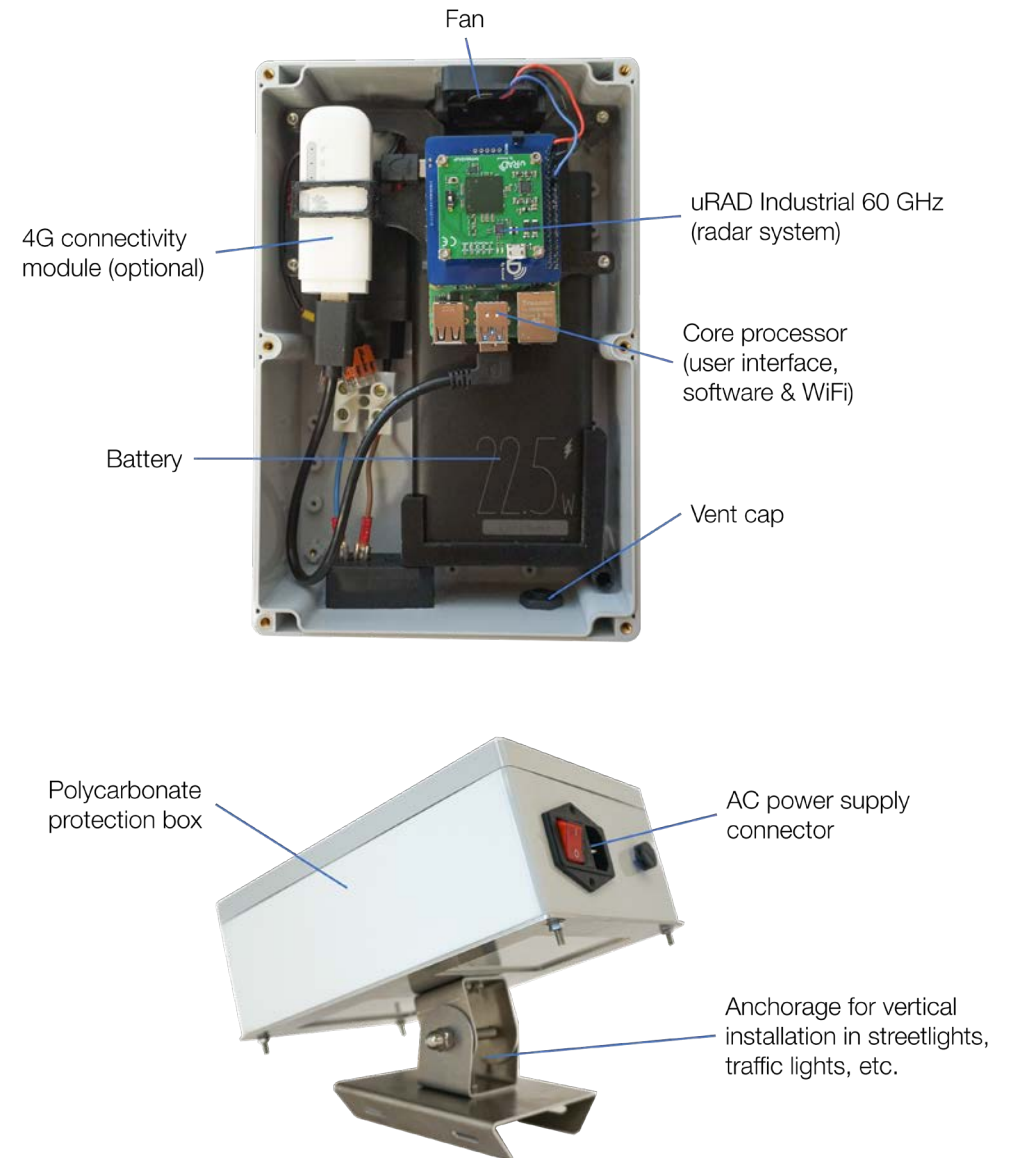
Dimensions and weight	240 x 160 x 90 mm, 2.1 kg
Material	Polycarbonate
Protection	IP66, NEMA 4X,12,13, UL-508, UL94 HB
Installation	Anchorage and clamps included. System for vertical adjustment.

Other parameters

Core processor	Quad-core 64-bit ARM Cortex-A72, 1.8 GHz, 2 GB SDRAM (Raspberry Pi)
Operating temperature	-20°C to +80°C
Communication	WiFi and 4G (optional)
Operative system	Linux (Raspberry Pi OS)

Performance

Maximum velocity	180 Km/h
Maximum distance	30 m (counting), 100 m (other applications)
Side distance	±15 m



CLAMPING STRUCTURE

The equipment includes a support structure for placing the radar outdoors on cylindrical columns. The central joint allows the necessary tilt angle to be set during installation. Clamps are also included.



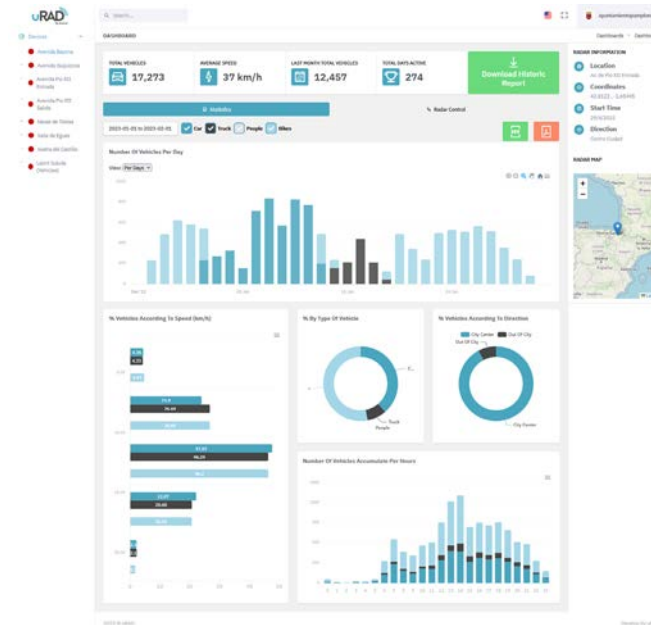
VEHICLE TYPE DISCRIMINATION

Discrimination between regular, medium and long vehicles, bicycles and pedestrians.

- Regular, medium and long vehicles are identified by their length.
- Regular vehicles are distinguished from bicycles based on their speed or the driving lane.
- Bicycles are distinguished from pedestrians based on their speed or the driving lane.

REAL TIME WEB APPLICATION

We offer a web platform where traffic statistics in real time are available. The platform is custom for each client according to their specific requirements. Users can access to traffic statistics and download reports quickly and easily through the web platform or mobile application.



DISCLAIMER

Anteral S.L. The information contained in this document is subject to change at any time without notice.

Anteral assumes no responsibility or liability for any loss, damage or defect of a product which is caused in whole or in part by:

1. use of any circuitry other than circuitry embodied in a Anteral S.L. product,
2. misuse or abuse including static discharge, neglect, or accident,
3. unauthorized modifications or repairs which have been soldered or altered in the assembly and are not capable of being tested by Anteral S.L. under its normal test conditions, or
4. improper installation, storage, handling, warehousing, or transportation, or
5. being subjected to unusual physical, thermal, or electrical stress.

Anteral S.L. makes no warranty of any kind, expressed or implied, with regard to this material, and specifically disclaims any and all expressed or implied warranties, either in fact or by operation of law, statutory or otherwise, including the implied warranties of merchantability and fitness for use or a particular purpose, and any implied warranty arising from course of dealing or usage of trade, as well as any common-law duties relating to accuracy or lack of negligence, with respect to this material, any Anteral S.L. product and any product documentation. All sales are made conditioned upon compliance with the critical uses policy set forth below.

CRITICAL USE EXCLUSION POLICY: BUYER AGREES NOT TO USE ANTERAL'S PRODUCTS FOR ANY APPLICATIONS OR IN ANY COMPONENTS USED IN LIFE SUPPORT DEVICES OR TO OPERATE NUCLEAR FACILITIES OR FOR USE IN OTHER MISSION-CRITICAL APPLICATIONS OR COMPONENTS WHERE HUMAN LIFE OR PROPERTY MAY BE AT STAKE.

Anteral S.L. owns all rights, titles and interests to the intellectual property related to Anteral S.L. products, including any software, firmware, copyright, patent, or trademark. The sale of Anteral S.L. products does not convey or imply any license under patent or other rights. Anteral S.L. retains the copyright and trademark rights in all documents, catalogs and plans supplied pursuant to or ancillary to the sale of products or services by Anteral S.L. Unless otherwise agreed to in writing by Anteral S.L., any reproduction, modification, translation, compilation, or representation of this material shall be strictly prohibited.

Last version: 20/10/2025

THE POWER OF RADAR. THE POWER OF YOU.

